

ITEM NO.	PART NUMBER	DESCRIPTION	QTY.
1	ClockCagePlate		2
2	BronzeBearing0.25Shaft		4
3	BallBearing0.25Bore		2
4	Long Shaft 1		1
5	Long Shaft 2		1
6	Short Shaft		1
7	Gear32T		2
8	Gear48T		2
9	Pointer		2
10	Bolt8_32_SubAssembly		6
11	SpacerTubeRawMaterial		2
12	ClockCagePost		2

D

C

B

A

4

3

↓

2

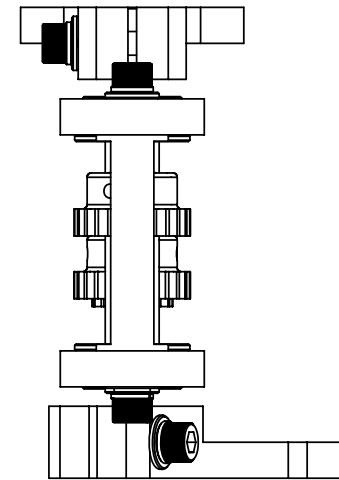
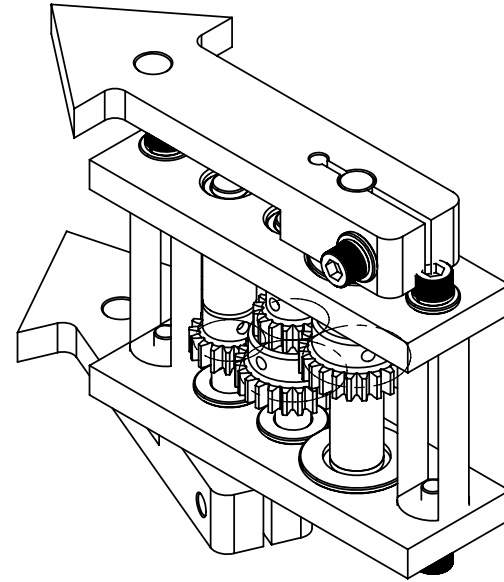
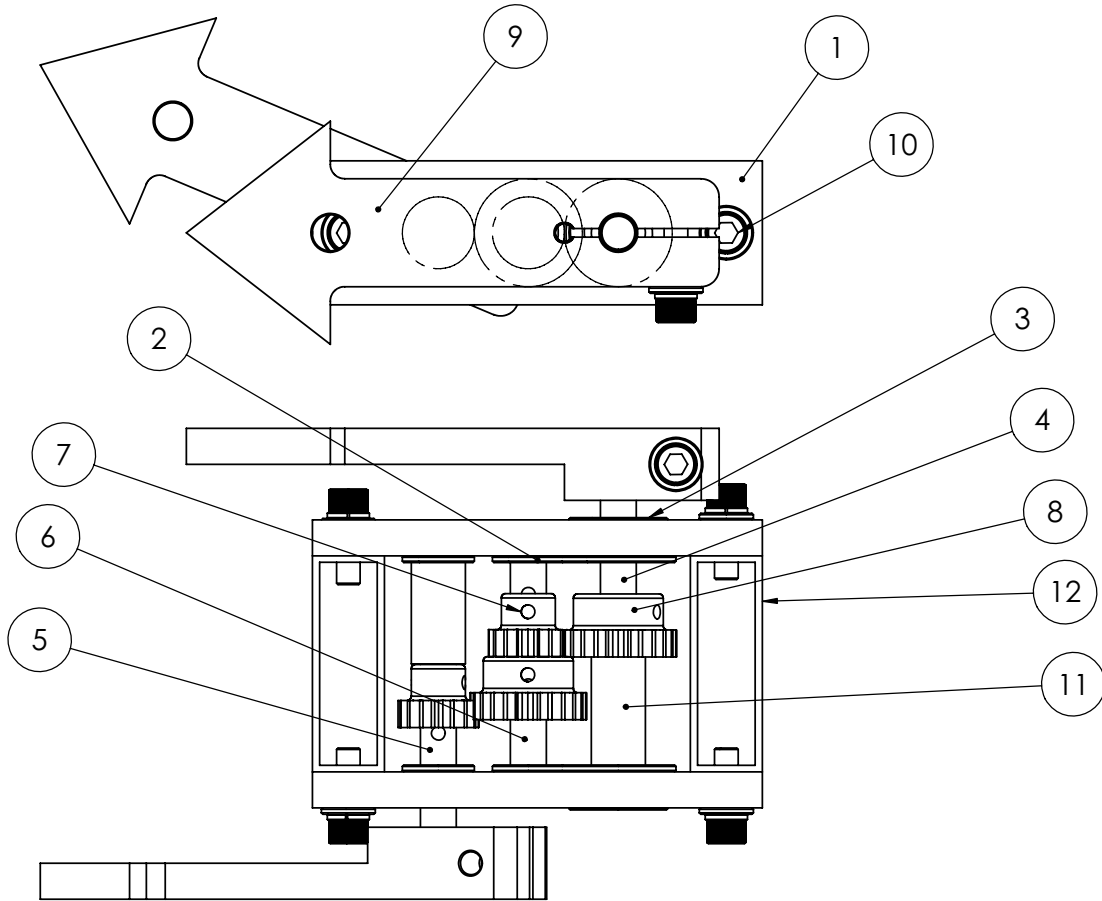
1

D

C

B

A



ALL DIMENSIONS ARE IN INCHES- INTERPRET
DRAWING PER ASME Y14.5 -1994

TOLERANCES UNLESS OTHERWISE SPECIFIED:
 X.X ± .03 $\angle \pm .5^\circ$
 X.XX ± .01
 X.XXX ± .005 $125/\surd$

REMOVE ALL BURRS AND SHARP EDGES
.015 R OR CHAMFER MAX

APPROVED	DATE
PREP BY R Young	4-28-06
CHECKED	
RESP ENG	
MFG ENG	
QUAL ENG	
◆ = (CRITICAL DIMENSION)	

Franklin W. Olin
College of Engineering

Gear Box Assembly

SIZE C	FSCM NO.	PART NO.	PART REV	DOC REV
SCALE 3:2	WT	SHEET 1	OF 1	

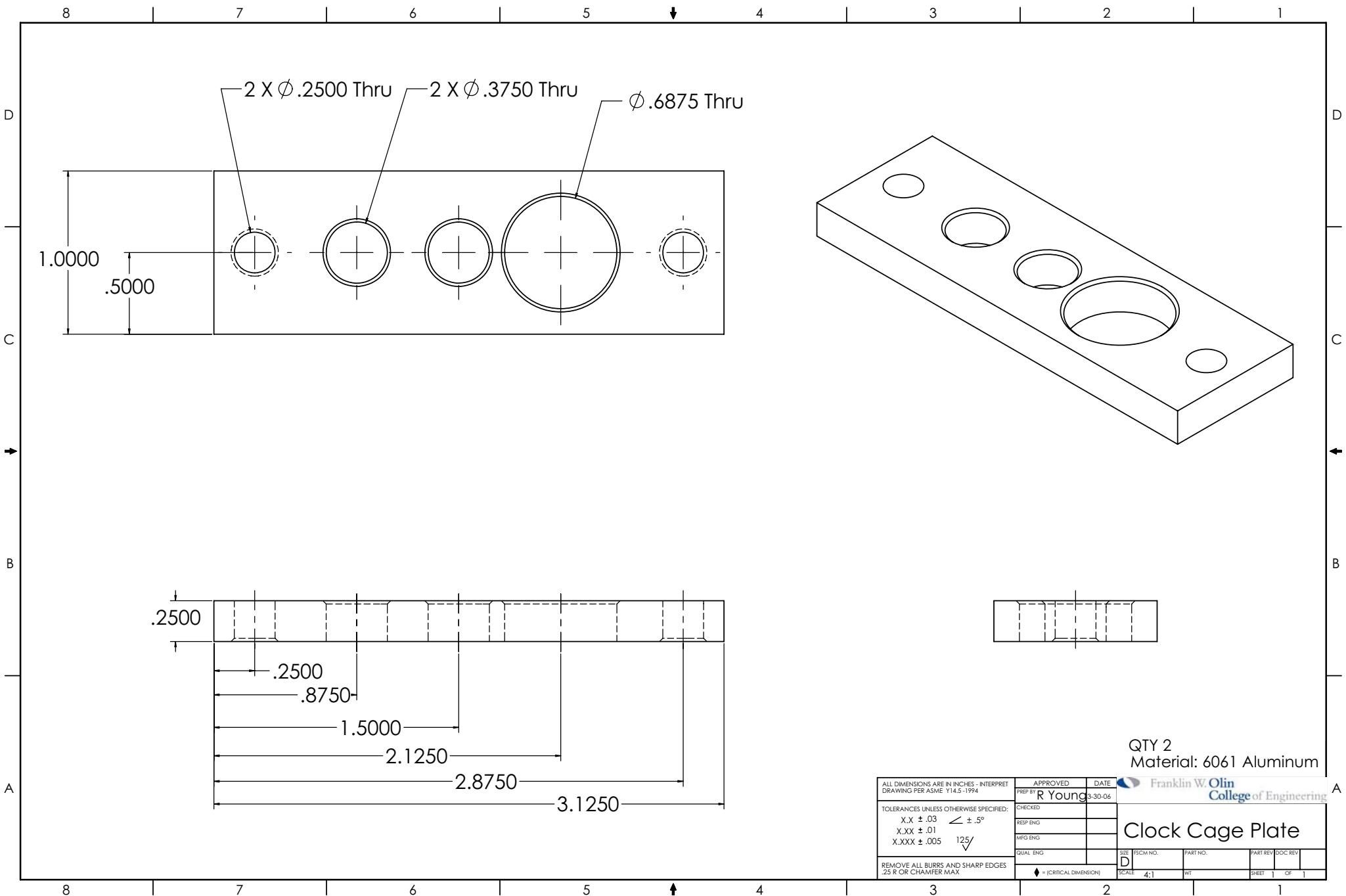
4

3

↑

2

1



QTY 2
Material: 6061 Aluminum

Franklin W. Olin
College of Engineering

ALL DIMENSIONS ARE IN INCHES - INTERPRET DRAWING PER ASME Y14.5-1994 TOLERANCES UNLESS OTHERWISE SPECIFIED: X.X ± .03 X.XX ± .01 X.XXX ± .005 REMOVE ALL BURRS AND SHARP EDGES .25 R OR CHAMFER MAX	APPROVED	DATE	Franklin W. Olin College of Engineering	
	PREP BY	R Young	3-30-06	
	CHECKED			
	RESP ENG			
	MFG ENG			
	QUAL ENG			
			SIZE	D
			P/SCM NO.	
			PART NO.	
			PART REV	DOC REV
			SCALE	4:1
			W/T	
			SHEET	1 OF 1

Clock Cage Plate

4

3

↓

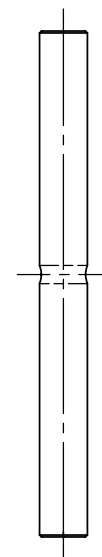
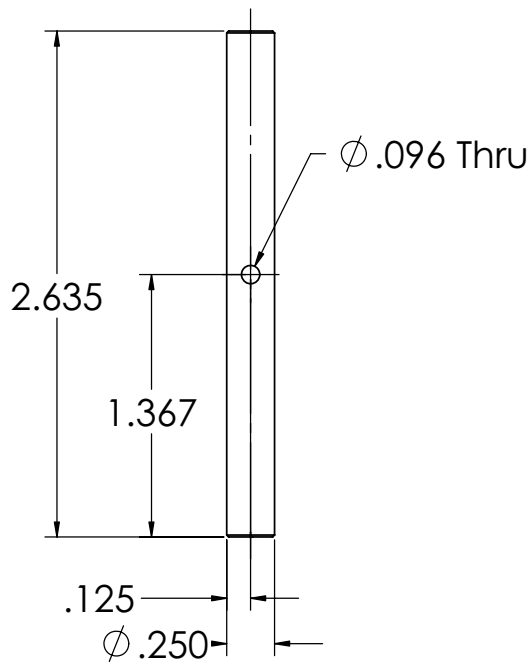
2

1

NOTES, UNLESS OTHERWISE SPECIFIED

- 1. UNSPECIFIED FILLET RADII .005-.010.
- 2. MATERIAL...
- 3. THREADS PER...

REV	ZONE	DESCRIPTION	APPROVED	DATE
-		INITIAL RELEASE		



QTY 1
Material: Stainless Steel

ALL DIMENSIONS ARE IN INCHES- INTERPRET DRAWING PER ASME Y14.5 -1994 TOLERANCES UNLESS OTHERWISE SPECIFIED: X.X ± .03 < ± .5° X.XX ± .01 X.XXX ± .005 125/√ REMOVE ALL BURRS AND SHARP EDGES .015 R OR CHAMFER MAX	APPROVED	DATE					
	PREP BY R Young	4-27-06					
	CHECKED		<h1>Long Shaft 1</h1>				
	RESP ENG						
MFG ENG							
QUAL ENG			SIZE C	FSCM NO.	PART NO.	PART REV	DOC REV
◆ = (CRITICAL DIMENSION)	SCALE 2:1	WT	SHEET 1	OF 2			

4

3

↑

2

1

D

D

C

C

B

B

A

A

4

3

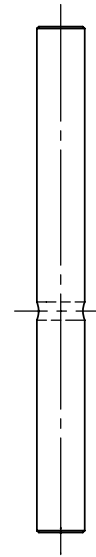
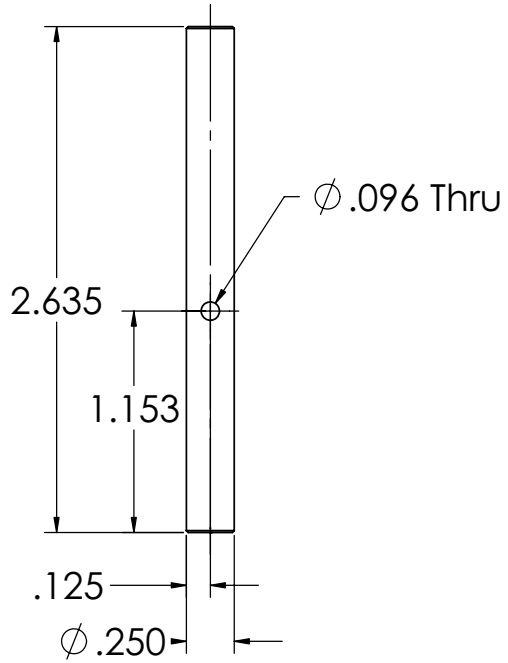
2

1

NOTES, UNLESS OTHERWISE SPECIFIED

- 1. UNSPECIFIED FILLET RADII .005-.010.
- 2. MATERIAL...
- 3. THREADS PER...

REV	ZONE	DESCRIPTION	APPROVED	DATE
-		INITIAL RELEASE		



QTY 1
Material: Stainless Steel

ALL DIMENSIONS ARE IN INCHES- INTERPRET DRAWING PER ASME Y14.5 -1994 TOLERANCES UNLESS OTHERWISE SPECIFIED: X.X ± .03 $\angle \pm .5^\circ$ X.XX ± .01 X.XXX ± .005 $\surd 125$ REMOVE ALL BURRS AND SHARP EDGES .015 R OR CHAMFER MAX	APPROVED	DATE					
	PREP BY R Young	4-27-06					
	CHECKED		<h1>Long Shaft 2</h1>				
	RESP ENG						
MFG ENG							
QUAL ENG			SIZE C	FSCM NO.	PART NO.	PART REV	DOC REV
◆ = (CRITICAL DIMENSION)	SCALE 2:1	WT	SHEET 1	OF 2			

4

3

2

1



4

3

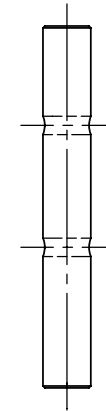
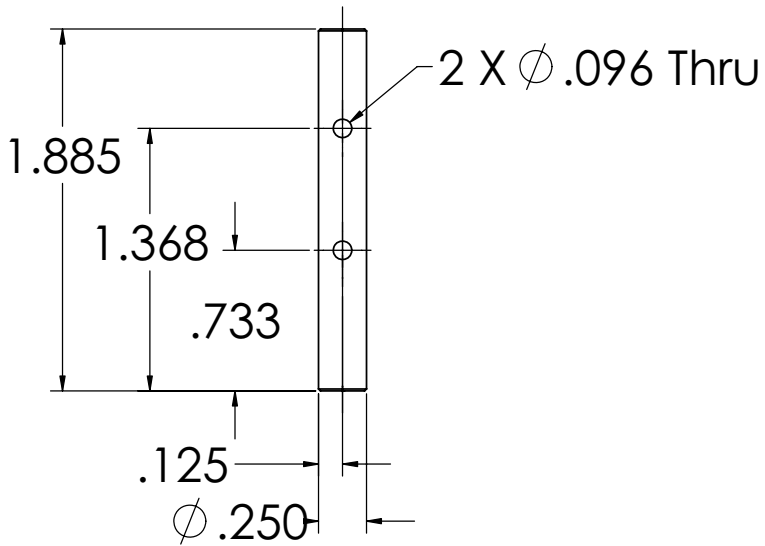
2

1

NOTES, UNLESS OTHERWISE SPECIFIED

- 1. UNSPECIFIED FILLET RADII .005-.010.
- 2. MATERIAL...
- 3. THREADS PER...

REV	ZONE	DESCRIPTION	APPROVED	DATE
-		INITIAL RELEASE		



QTY 1
Material: Stainless Steel

ALL DIMENSIONS ARE IN INCHES- INTERPRET DRAWING PER ASME Y14.5 -1994 TOLERANCES UNLESS OTHERWISE SPECIFIED: X.X ± .03 < ± .5° X.XX ± .01 X.XXX ± .005 125/√ REMOVE ALL BURRS AND SHARP EDGES .015 R OR CHAMFER MAX	APPROVED	DATE					
	PREP BY R Young	4-27-06					
	CHECKED		Short Shaft				
	RESP ENG						
MFG ENG							
QUAL ENG			SIZE C	FSCM NO.	PART NO.	PART REV	DOC REV
◆ = (CRITICAL DIMENSION)	SCALE 2:1	WT	SHEET 1	OF 2			

4

3

2

1

D

D

C

C

B

B

A

A

4

3

2

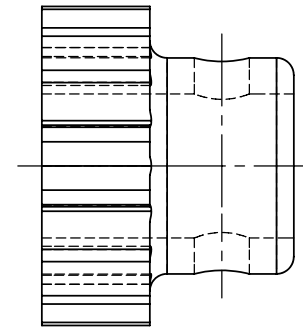
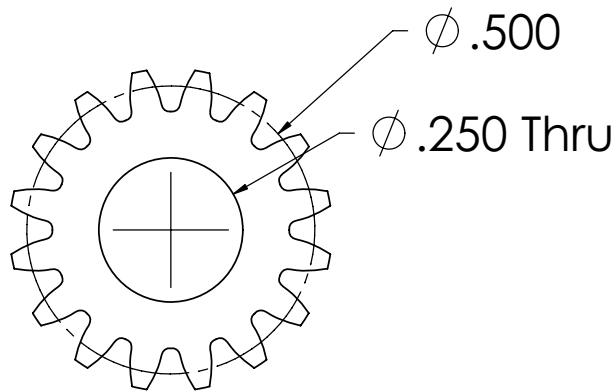
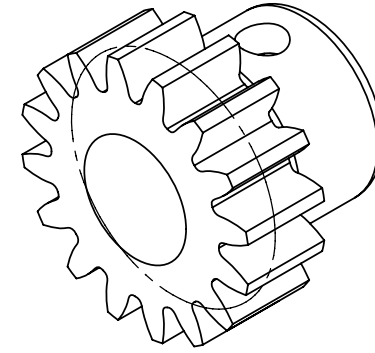
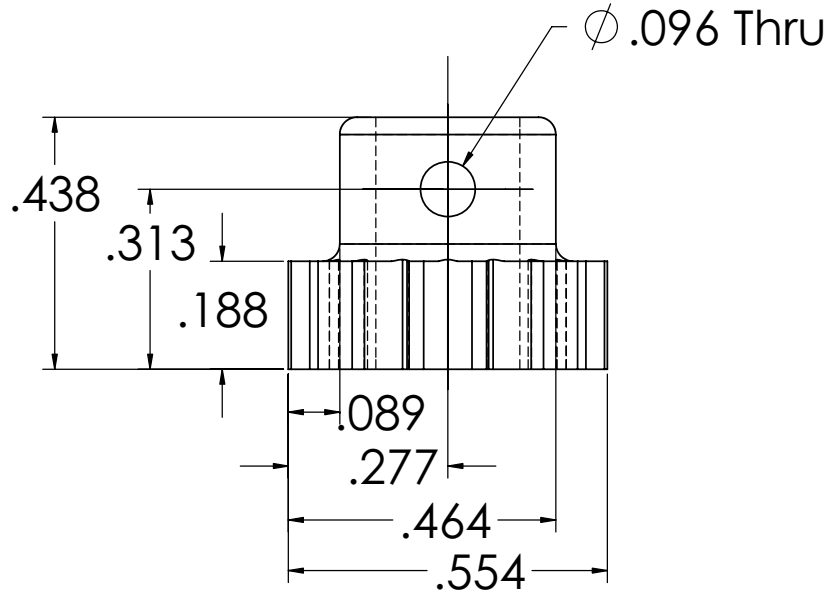
1

NOTES, UNLESS OTHERWISE SPECIFIED

- 1. UNSPECIFIED FILLET RADII .005-.010.
- 2. MATERIAL...
- 3. THREADS PER...

REV	ZONE	DESCRIPTION	APPROVED	DATE
-		INITIAL RELEASE		

Note: Not all manufacturer features dimensioned fully



QTY 2
Material: Nylon

ALL DIMENSIONS ARE IN INCHES- INTERPRET DRAWING PER ASME Y14.5 -1994	APPROVED	DATE						
	PREP BY R Young	4-27-06						
	TOLERANCES UNLESS OTHERWISE SPECIFIED:	CHECKED	<h1 style="text-align: center;">32 T Gear</h1>					
	X.X ± .03 $\angle \pm .5^\circ$	RESP ENG						
X.XX ± .01	MFG ENG							
X.XXX ± .005 $125/\surd$	QUAL ENG	DATE	SIZE	FSCM NO.	PART NO.	PART REV	DOC REV	
REMOVE ALL BURRS AND SHARP EDGES .015 R OR CHAMFER MAX	◆ = (CRITICAL DIMENSION)	SCALE	6:1	WT	SHEET	1	OF	2

4

3

2

1

4

3

2

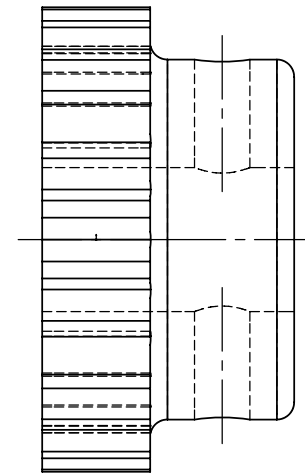
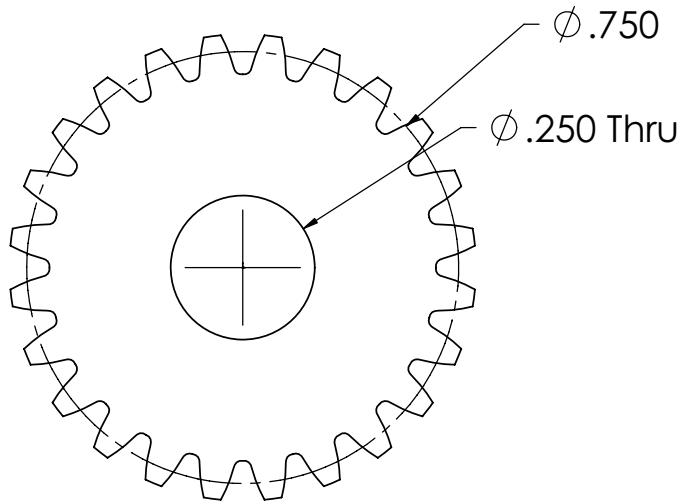
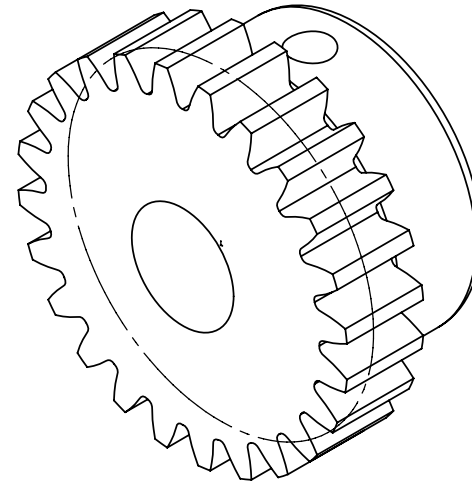
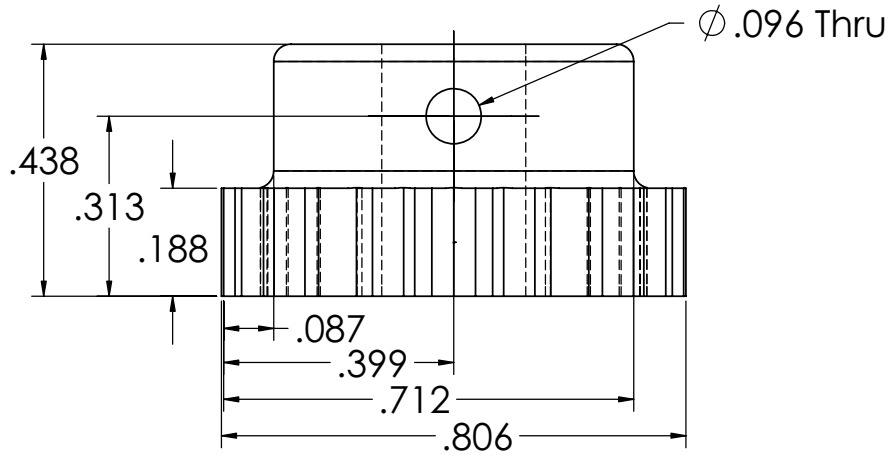
1

NOTES, UNLESS OTHERWISE SPECIFIED

- 1. UNSPECIFIED FILLET RADII .005-.010.
- 2. MATERIAL...
- 3. THREADS PER...

REV	ZONE	DESCRIPTION	APPROVED	DATE
-		INITIAL RELEASE		

Note: Not all Manufacturer Features Dimensioned Fully



QTY 2
Material: Nylon

ALL DIMENSIONS ARE IN INCHES- INTERPRET DRAWING PER ASME Y14.5 -1994

TOLERANCES UNLESS OTHERWISE SPECIFIED:

X.X $\pm .03$ $\angle \pm .5^\circ$

X.XX $\pm .01$

X.XXX $\pm .005$ $\sqrt{125}$

REMOVE ALL BURRS AND SHARP EDGES .015 R OR CHAMFER MAX

APPROVED	DATE
PREP BY R Young	4-27-06
CHECKED	
RESP ENG	
MFG ENG	
QUAL ENG	

Franklin W. Olin College of Engineering

48 T Gear

SIZE	FSCM NO.	PART NO.	PART REV	DOC REV
C				
SCALE	6:1	WT	SHEET 1	OF 2

4

3

2

1

4

3

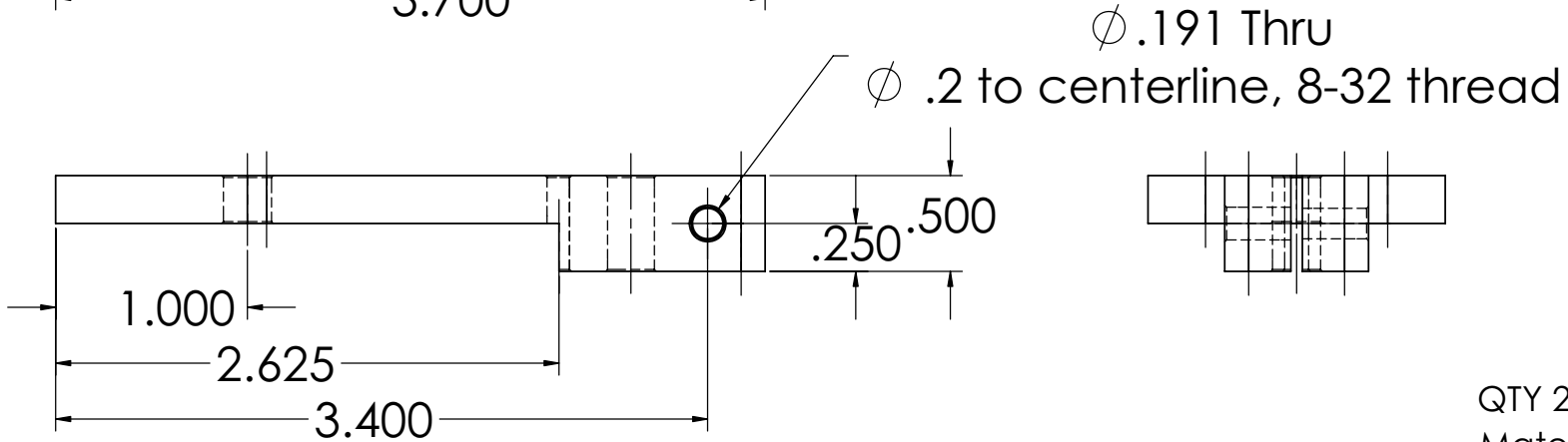
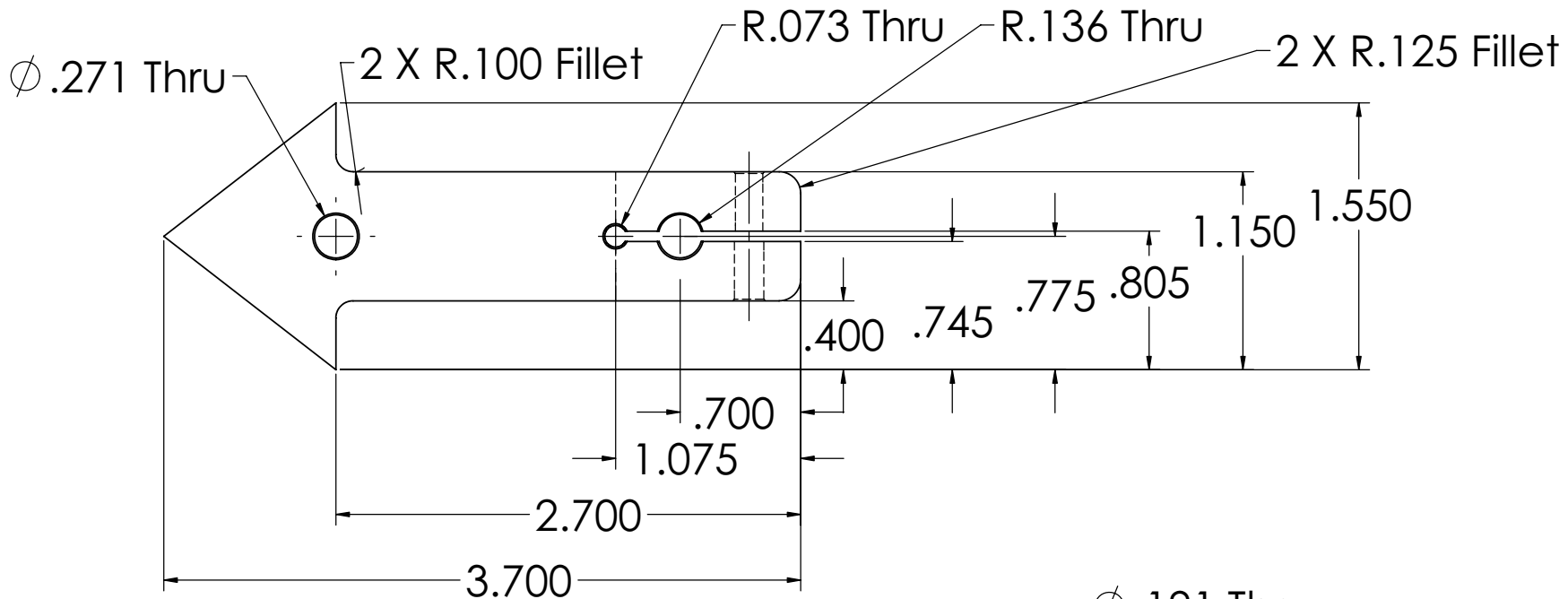
2

1

NOTES, UNLESS OTHERWISE SPECIFIED

- 1. UNSPECIFIED FILLET RADII .005-.010.
- 2. MATERIAL...
- 3. THREADS PER...

REV	ZONE	DESCRIPTION	APPROVED	DATE
-		INITIAL RELEASE		



QTY 2
Material: Black Delrin

ALL DIMENSIONS ARE IN INCHES- INTERPRET DRAWING PER ASME Y14.5 -1994

TOLERANCES UNLESS OTHERWISE SPECIFIED:
 X.X $\pm .03$ $\angle \pm .5^\circ$
 X.XX $\pm .01$
 X.XXX $\pm .005$ $\sqrt{125}$

REMOVE ALL BURRS AND SHARP EDGES .015 R OR CHAMFER MAX

APPROVED	DATE
PREP BY R Young	4-27-06
CHECKED	
RESP ENG	
MFG ENG	
QUAL ENG	

Franklin W. Olin
College of Engineering

Pointer

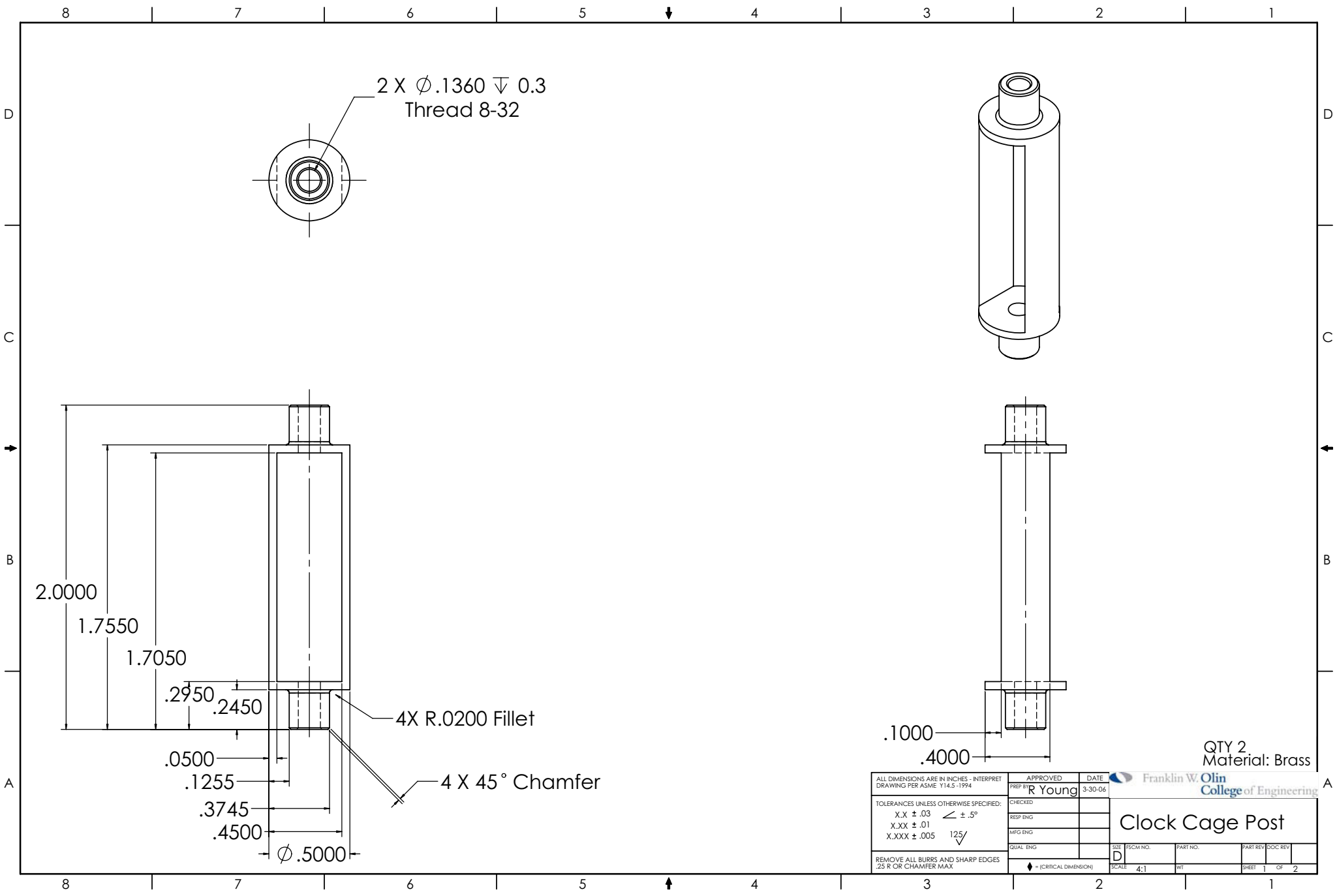
SIZE	FSCM NO.	PART NO.	PART REV	DOC REV
C				
SCALE	2:1	WT	SHEET 1	OF 2

4

3

2

1



QTY 2
Material: Brass

ALL DIMENSIONS ARE IN INCHES - INTERPRET DRAWING PER ASME Y14.5-1994 TOLERANCES UNLESS OTHERWISE SPECIFIED: X.X ± .03 X.XX ± .01 X.XXX ± .005 125 REMOVE ALL BURRS AND SHARP EDGES .25 R OR CHAMFER MAX	APPROVED	DATE	Franklin W. Olin College of Engineering	
	PREP BY	R Young	3-30-06	
	CHECKED			
	RESP ENG			
	MFG ENG			
	QUAL ENG			
			SIZE	D
			SCALE	4:1
			PART NO.	
			W/T	
			PART REV	
			DOC REV	
			SHEET	1 OF 2

Clock Cage Post